

# LOGITECH BUSINESS COLLABORATION SOLUTIONS FOR GOOGLE MEET



In an enterprise landscape made up of in-office, hybrid, and remote workers, collaboration can be a challenge. When you combine Google Meet with Logitech's video collaboration solutions, you get an enterprise-grade ecosystem of products, software, and services to enable collaboration for your team, regardless of location.

Certified for Google Meet, our innovative technology improves meeting experiences for the employee while satisfying IT needs around device deployment and maintenance.

## LOGITECH ADVANTAGE

- **EQUITY:** Our solutions unleash a more inclusive and equitable work experience for all.
- **PERFORMANCE:** Different types of work require different tools; we design with the end user in mind.
- **COLLABORATION:** We enable authentic connection and co-creation, fueling healthy hybrid cultures.
- **COMPATIBILITY:** Our plug-and-play solutions are certified for Google Meet, Google Voice, and Works With Chromebook.
- **SECURITY:** Our ecosystem is designed with security and manageability in mind, keeping power in IT's hands.
- **SUSTAINABILITY:** We are committed to doing right by the planet in everything we do.
- **FLEXIBILITY:** Deploy Google Meet room solutions on either ChromeOS or Android platforms.

# THE COMPLETE TEAM WORKSPACE SOLUTION

Everything you need to equip your team workspaces for productive collaboration.

## PRODUCTS

Logitech has an extensive product suite to improve productivity in the hybrid workspace.

**Conference Cameras and Video Bars >>**

**Cameras and Room Add-Ons >>**

**Touch Controllers >>**

**Compute >>**

**Individual Workspaces >>**

**Accessories >>**

**Software >>**

## SERVICES

Logitech services provide peace of mind. With comprehensive service plans and extended warranties, our solutions will do the job right, or we will make it right.

**Logitech Select >>**

**Extended Warranty >>**



### QUALITY TECHNOLOGY: RIGHTSENSE™

**RightSight™** automatically frames and focuses the speaker while **RightLight™** optimizes light balance and color. **RightSound™** suppresses background noise and auto-levels voices. Together, RightSense technology suite enables quality video meetings every time.



# CONFERENCE CAMERAS AND VIDEO BARS

---

Our trusted family of video collaboration solutions are certified to work with Google Meet™. Logitech conference cameras and video bars help create more inclusive workspaces with high-quality video and audio that make it feel like your whole team is in the room, even when half of them work from home.



## MEETUP

MeetUp is a plug-and-play conference camera for small meeting rooms, featuring an ultra-wide lens with motorized pan and tilt and up to 5X zoom in a compact, easy-to-install form factor.



## RALLY BAR HUDDLE

Featuring a sleek design and robust technology, Rally Bar Huddle is a straightforward and powerful solution for small spaces. It features AI video intelligence, advanced sound pickup, noise suppression, and ongoing software improvements to provide a clear and natural meeting experience for remote workers.



## RALLY BAR MINI

Simplicity meets versatility with Rally Bar Mini, Logitech's most advanced all-in-one video bar for small rooms or huddle spaces. Deploy in USB or appliance mode.



## RALLY BAR

Rally Bar is Logitech's premier, all-in-one video bar for midsize meeting rooms. Brilliant optics, powerful audio, and remarkable simplicity set a new standard for video collaboration. Deploy in USB or appliance mode.



## RALLY CAMERA

Rally Camera is a premium standalone USB camera that delivers brilliantly sharp video at resolutions up to 4K, perfect for medium to large meeting spaces. Rally can be used with third-party solutions or as a secondary camera in larger team workspaces and auditoriums.



## RALLY PLUS

Power meets flexibility with Rally Plus, Logitech's video conferencing system for large and extra-large rooms. Rally Plus features an ultra-HD PTZ camera, modular audio, and AI-driven performance. Expandable up to seven mic pods for even greater coverage.

Google Meet hardware license required not included. Contact your Logitech Account Representative for more information.

# CAMERAS AND ROOM ADD-ONS

---



## SIGHT

### Tabletop Multi-Participant Camera

Give remote participants the best meeting room perspective with Logitech Sight, an AI-powered tabletop camera. Compatible with Rally Bar and Rally Bar Mini, Logitech Sight automatically identifies and frames speakers for a better remote experience.

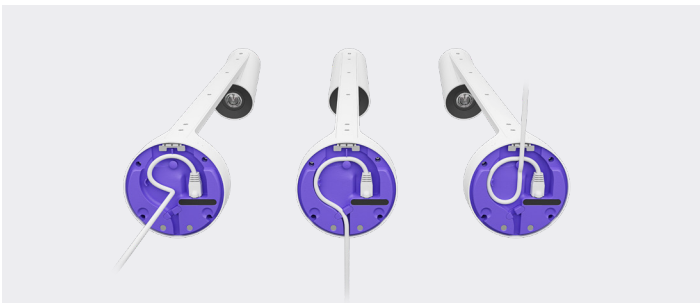
## SCRIBE

### Whiteboard Camera

Effortlessly share whiteboards into video meetings with Logitech Scribe, an AI-powered whiteboard camera. With built-in AI and a custom lens, Scribe broadcasts whiteboard content into video meetings with outstanding clarity. Easily start sharing with the Tap touch controller.

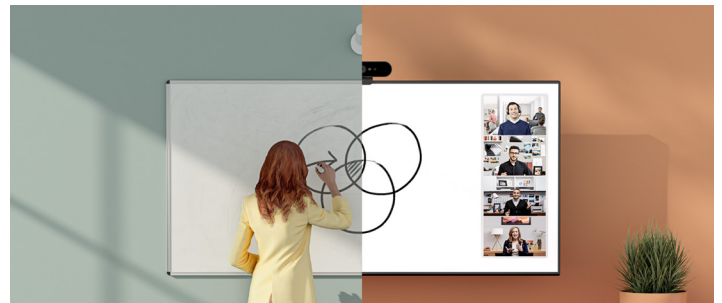


## CLEAN, FLEXIBLE INSTALLATION



The included installation kit ensure clean, confident installs with cable retention and options to route cabling up, down, or through the wall.

## AI POWERED PERFORMANCE



Scribe's built-in AI delivers a transparency effect, allowing participants to see "through" the presenter for an unobstructed view of the whiteboard.



# TOUCH CONTROLLERS AND COMPUTE

---

Deliver one-touch join, calendar integration, easy content-sharing, and a consistent experience across all rooms.



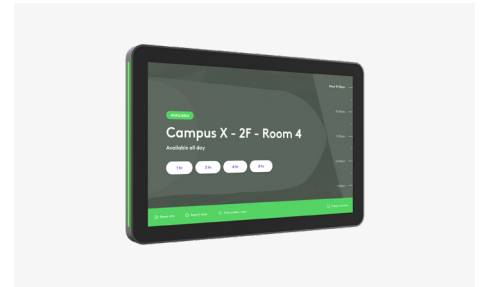
## LOGITECH TAP

Meeting room touch controller that delivers one-touch join and easy content-sharing. Tap provides clean and secure cabling and multiple mounting options for a tidy and professional install. Tap is included with room solutions that use USB-connected touch controllers.



## LOGITECH TAP IP

Make video meetings simple to join with a network-connected touch controller. Streamline setup with a single cable that can be routed through the back or below the device. Keep connections tight with built-in strain relief and retention mechanisms. Like Logitech Tap, Tap IP delivers one-touch join, easy content-sharing, and a seamless meeting experience across all rooms.



## TAP SCHEDULER

Purpose-built scheduling panel for meeting spaces. Indicates availability from a distance and displays meeting details up close. Claim the space for ad hoc meetings, or book ahead for scheduled sessions. Clean cable management and included mounts allow Tap Scheduler to be professionally installed for fast deployment.

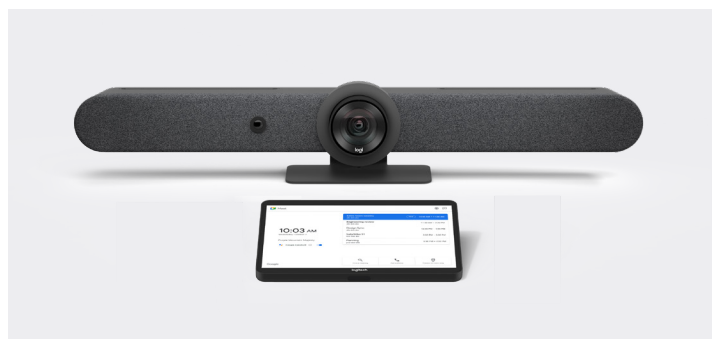


## GOOGLE MEET COMPUTE

This dedicated meeting room compute was purpose-built and optimized for Google Meet. It runs Chrome OS in a special Meet mode and is sold only with an approved room kit bundle.

## GOOGLE MEET ON ANDROID

With Google Meet on Android, the Google Meet application runs on-device, leveraging the built-in compute of the Rally Bar and Rally Bar Mini. This simplifies the setup and management experience.



# INDIVIDUAL WORKSPACES

---

Single cable connectivity to your peripherals, whether working from a hot desk, phone booth, or focus room.



## LOGI DOCK FLEX

A managed docking station that enables easy and personalized desk booking for employees and simple device management for IT.

With Logi Dock Flex, employees never have to guess which desk is free, occupied, or in between. The 8" screen clearly indicates desk status at a glance. They can then tap the device directly at the desk to book and claim it, whether pre-booked or ad hoc.

And IT can ensure that desks are fully operational at all times from any location, using Logitech Sync.



## LOGI DOCK FOCUS ROOM KIT

Video conferencing solution for individual meeting spaces, focus rooms, and phone booths, with single-cable simplicity.

Employees pop into a focus room, connect a laptop, and instantly start a meeting.

No need to install drivers. Connect the single USB-C cable to your laptop for an instant meeting with professional-quality audio and video — and power the laptop up to 100W at the same time. Logi Dock works with laptops that support USB-C with DisplayPort Alt Mode.

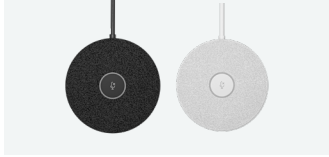


# ACCESSORIES

---

## CONFERENCE CAMERA ACCESSORIES

Accessories for Rally Bar, Rally Bar Mini, Rally, and MeetUp that offer modular flexibility, so you can equip any team workspace with the solutions to help make meetings equitable for everyone on your team.



### RALLY MIC POD

Modular microphones with RightSound for Rally Bar Mini, Rally Bar, and Rally.



### MIC POD MOUNT

Table mount for Rally Mic Pod.



### MIC POD PENDANT MOUNT

Ceiling mount for Rally Mic Pod.



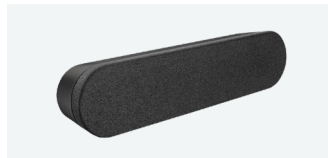
### RALLY MIC POD HUB

Customize mic placement for any conference table configuration.



### RALLY MIC POD EXTENSION CABLE

10 m (32.8 ft) extension cable for Rally Mic Pod.



### RALLY SPEAKER

Second speaker connects to Logitech Rally for clear, rich sound.



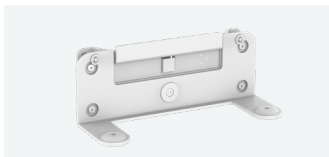
### RALLY MOUNT KIT

Custom mounts for a sleek installation and secure cabling.



### TV MOUNT FOR VIDEO BARS

Attach any Rally Bar to almost any display with VESA mounting points.



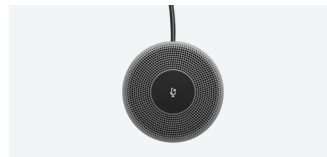
### WALL MOUNT FOR VIDEO BARS

VESA-compatible mounting kit for Rally Bar and Rally Bar Mini.



### TV MOUNT FOR MEETUP

Mounting option for MeetUp Conference Camera.



### EXPANSION MIC FOR MEETUP

Add-on microphone with mute control for extended audio range.



### RALLY MIC POD CAT COUPLER

Connect the Rally Mic Pod Cat Coupler to a standard CAT cable to extend the length of the connection for Rally Mic Pods and Mic Pod Hubs to a custom length.



### MEETUP MIC EXTENSION CABLE

10 m (32.8 ft) extension cable for Expansion Mic.

# ACCESSORIES CONT.

---

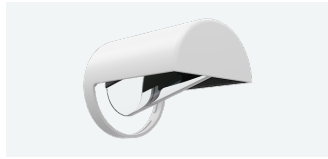
## SCRIBE ACCESSORIES

With these accessories, the Scribe whiteboard camera simplifies whiteboard sharing in any space.



### SCRIBE GLASS MOUNT

Mount Logitech Scribe on glass surfaces.



### POLARIZER FOR SCRIBE

Polarizing filter to reduce glare in environments with bright lighting.

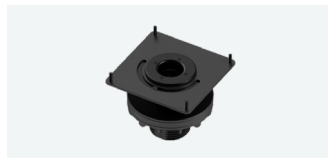
## TAP ACCESSORIES

Simplify cable management and mount the Tap touch controller in the most convenient location in every team workspace.



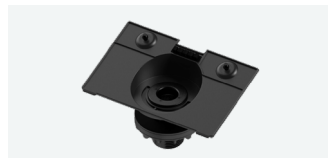
### WALL MOUNT FOR TAP

Space-saving wall mount with cable management for Logitech Tap and Tap IP meeting room touch controllers.



### TABLE MOUNT FOR TAP

Swiveling table mount with cable management for Logitech Tap and Tap IP meeting room controllers.



### RISER MOUNT FOR TAP

Elevated table mount with swivel and cable management for Logitech Tap and Tap IP meeting room touch controllers.



### CAT5e KIT FOR TAP

Cabling kit to supply USB data and power to Logitech Tap for cleaner and simpler cable routing.

## COMPUTE ACCESSORIES

Securely mount compute device out of sight and out of harm's way.



### COMPUTE MOUNT

Mounting bracket with cable retention for Google Meet Compute and other video conferencing compute devices.



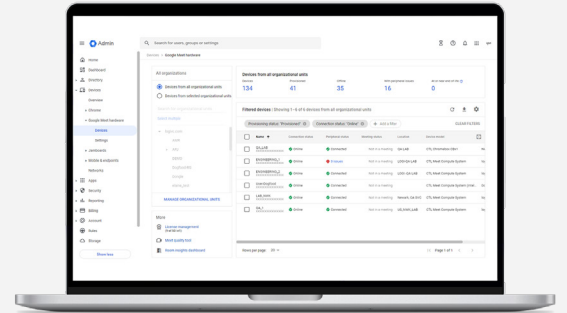
# SOFTWARE

Logitech software is integral to team workspaces. Software enhances Logitech products by ensuring a consistent, unified, and customizable experience across devices and rooms, along with the ability to remotely manage and update devices.

## MANAGEABILITY

### GOOGLE ADMIN CONSOLE

Easily monitor and manage your meeting room devices, get connectivity and peripheral alerts, and turn on advanced room features from the Google Workspace Admin Console.

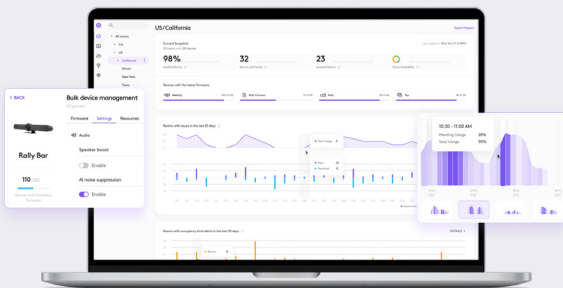


### LOGITECH SYNC

Sync works alongside Google Admin Console to help you deploy and manage your entire device ecosystem. Whether employees are in the office, at home, or somewhere else, Sync helps everyone stay connected by ensuring their Logitech personal workspace solutions are healthy and up to date.

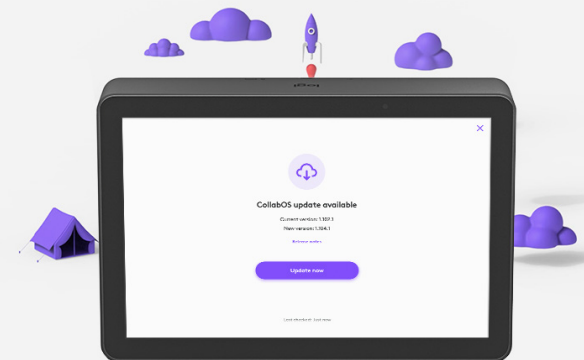
Integration with Logi Tune allows you to update webcams, headsets, and Logi Dock devices connected to personal computers at remote locations or office desks.

Logitech Sync also allows you to track device usage so you can better understand how devices are used and then optimize your future purchases.



### CollabOS

This operating system integrates with top video conferencing, scheduling, and space management providers to deliver high-quality experiences. With CollabOS, devices work seamlessly together, continuously improve, and are easier than ever to deploy and manage.



# SERVICES

---

Our solutions will do the job right, or we'll make it right.

## LOGITECH SELECT

Logitech Select is a comprehensive service plan offering 24/7 support, a dedicated Customer Success Manager<sup>1</sup>, product replacement, accelerated RMA, and on-site spares.

<sup>1</sup> Available with purchase of a service plan for 50+ rooms.

<sup>2</sup> Available for users of Logitech Sync.



## EXTENDED WARRANTY

With an extended warranty,<sup>3</sup> your Logitech purchases are protected against defects for up to five years from the purchase date. Extended warranties are available for either one year or three years beyond the original Logitech manufacturer's limited two-year warranty.

<sup>3</sup> Terms and conditions apply. Not available in all countries. Contact your reseller.



---

## ELEVATE YOUR WORKSPACES

Logitech designs video collaboration solutions that make equitable meeting experiences possible for everyone. We help teams work better together, from anywhere, without compromising on quality, productivity, or the creativity that comes from collaboration.

Contact your Logitech Account Rep for more information.

**[Logitech.com/google-meet](https://logitech.com/google-meet)**

Test drive a video-first culture at your organization with up to two FREE Logitech Room Solutions for Google Meet.

Kickstart your business today: **[bit.ly/kickstartPOC](https://bit.ly/kickstartPOC)**

# ROOM SOLUTION MATRIX



	MeetUp	Rally Bar Huddle	Rally Bar Mini	Rally Bar	Rally	Rally Plus
<b>Room Size</b>	Huddle to Small	Huddle to Small	Small to Medium	Medium to Large	Medium to Large	Large to Extra Large
<b>Conference Camera</b>	Logitech MeetUp	Logitech Rally Bar Huddle	Logitech Rally Bar Mini	Logitech Rally Bar	Logitech Rally System	Logitech Rally Plus
<b>Supported Configurations</b>	Google Meet Compute System	Google Meet Compute System	Google Meet on Android Google Meet Compute System	Google Meet on Android Google Meet Compute System	Google Meet Compute System	Google Meet Compute System
<b>Supported Touchscreen</b>	Tap USB/Cat5e Kit	Tap USB/Cat5e Kit	Tap IP (Meet on Android) Tap USB/Cat5e Kit (Meet Compute)	Tap IP (Meet on Android) Tap USB/Cat5e Kit (Meet Compute)	Tap USB/Cat5e Kit	Tap USB/Cat5e Kit
<b>Camera</b>	5x digital zoom	4x digital zoom	4x digital zoom	Up to 15x total zoom (5x optical and 3x digital)	Up to 15x total zoom (5x optical and 3x digital)	Up to 15x total zoom (5x optical and 3x digital)
<b>Speakers/Mic</b>	Embedded speaker elements and mic array. Pickup Range: 13.1 ft / 4 m With optional Expansion Mic: 16.4 ft / 5 m Cable Length: 19.69 ft / 6 m	Embedded speaker elements and mic array. Pickup Range: 23 ft / 7m	Embedded speaker elements and mic array. Pickup Range: 23 ft / 7m	Embedded speaker elements and mic array. Pickup Range: 23 ft / 7m	One speaker and one mic pod Pickup Range: 15 ft / 4.5 m Mic Pod Cable Length: 9.6 ft / 2.95 m	Two speakers and two mic pods Pickup Range: 15 ft / 4.5 m Mic Pod Cable Length: 9.6 ft / 2.95 m 15 ft (4.5 m)
<b>Total Room Coverage</b>	163° h x 110° v	120° h x 80° v	163° h x 110° v	130° h x 80° v	260° h x 190° v	260° h x 190° v
<b>AI RightSense Technologies</b>	RightLight and RightSound	RightSight Autoframing, RightLight, and RightSound	RightSight Autoframing, RightLight, and RightSound	RightSight Autoframing, RightLight, and RightSound	RightLight and RightSound	RightLight and RightSound
<b>Included Mounts</b>	No	Yes; Multimount	No	No	Yes; Wall Mount	Yes; Wall Mount
<b>Rally Mic Pod Hub</b>	No	No	Optional, Not Included	Optional, Not Included	Yes	Yes
<b>Optional Accessories</b>	TV Mount for MeetUp TV Mount XL for MeetUp MeetUp Mic Extension Cable Expansion Mic for MeetUp	Easy Clean Cover Off White Fabric Cover Tap Table Mount Tap Riser Mount Tap Wall Mount TV Mount for Video Bars	Tap Table Mount Tap Riser Mount Tap Wall Mount Rally Mic Pod (up to 3 total) Rally Mic Pod Hub Rally Mic Pod Mount Rally Mic Pod Pendant Mount TV Mount for Video Bars Wall Mount for Video Bars	Tap Table Mount Tap Riser Mount Tap Wall Mount Rally Mic Pod (up to 4 total) Rally Mic Pod Hub Rally Mic Pod Mount Rally Mic Pod Pendant Mount TV Mount for Video Bars Wall Mount for Video Bars	Tap Table Mount Tap Riser Mount Tap Wall Mount Rally Mic Pod (up to 7 total) Rally Mic Pod Pendant Mount Rally Mic Pod Hub Rally Mic Pod Mount	Tap Table Mount Tap Riser Mount Tap Wall Mount Rally Mic Pod (up to 7 total) Rally Mic Pod Pendant Mount Rally Mic Pod Hub Rally Mic Pod Mount
<b>Support Resources</b>	Printed Setup Guide, Online Setup Portal, Logitech Support Services					
<b>Warranty</b>	2 year limited hardware warranty. Additional one year extended warranty can be purchased at the time of hardware purchase. Contact your reseller for availability.					